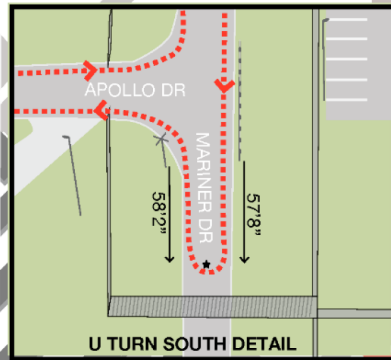
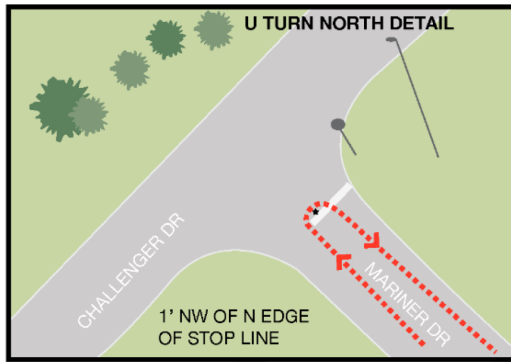


- Start / Finish** – (N32° 40.664' W96° 51.613') – North pad at Commemorative Air Force National Air Base
- U Turn on Runway 31** – (N32° 40.695' W96° 51.945') – 25' SE of centerline at center of intersection of Runway 31 and A3
- Mile 1** – (N32° 40.663' W96° 51.681') – 5676 Apollo Dr – 23' W of E edge of building
- U Turn North** – (N32° 41.054' W96° 51.572') – Mariner Dr at Challenger Dr – 1' NW of NW side of STOP line at intersection – marked in center of street
- U Turn South** – (N32° 40.728' W96° 51.534') – Mariner Dr just S of Apollo Dr – 57'8" S of S end of guardrail and 58'2" S of street sign at SW corner of intersection
- Mile 2** – (N32° 40.727' W96° 51.609') – 5695 Apollo Dr – 7' E of E edge of building
- Mile 3** – (N32° 40.641' W96° 51.698') – Airport ramp – 77' W of W edge of Jet Fuel Building at 5661 Apollo Dr

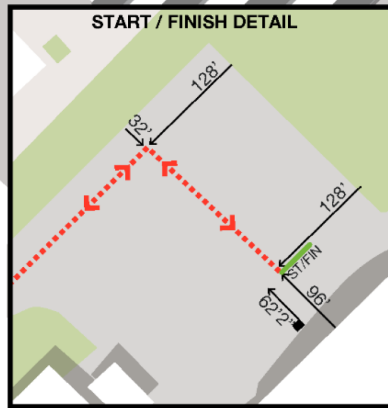


This Dallas TX course was measured following the Shortest Possible Route (SPR) except where noted by Logan A Burgess on November 12, 2021. Map note to scale.

Restrictions as noted below.

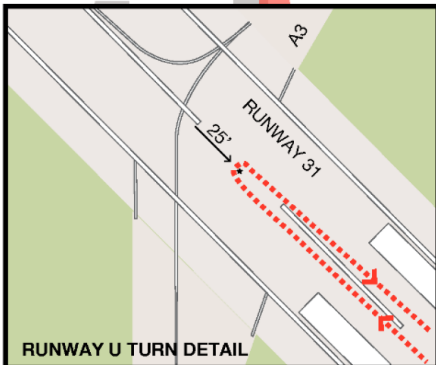
- A1 – runners remain SE of centerline
- Runway 31 – runners remain on W side of centerline while running N and E of centerline when running S.
- A2 – runners remain SE of centerline
- Apollo Dr – cones along centerline – runners stay N of cones while runner E and S of cones while running W
- Mariner Dr – cones along centerline – runners stay W of cones while running N and E of cones while running S

Course description - Start at CAF Pad, run NW, turn SW, turn SE on Taxiway A, SW on A1, NW on Runway 31, U turn, SE on Runway 31, NE on A2, continue NE onto Apollo Dr, N on Mariner Dr, U Turn, S on Mariner, U turn, N on Mariner, SW on Apollo Dr, continue SW to Taxiway A, SE on Taxiway A, SW on A1, NW on Runway 31, U Turn, SE on Runway 31, NE on A2, continue NE to CAF Pad, turn SE to Finish.



USATF Certificate
TX21057LAB
Effective: 11/28/2021
Through: 12/31/2031

Map Not To Scale
WGS84 GPS Datum



Logan Burgess
Measured by Logan Burgess
USATF / RRIC Course Certifier
ABMS / World Athletics 21' Measurer
loganburgess@yahoo.com
214.803.7800



5 KM